



Thank you for your interest in JETporter Electric Towbarless Tugs. Enclosed is the information you requested on the JP30 series.

The JP30 series was designed and built after extensive research of the aircraft tug industry. JETporter incorporated the best features found on competitive units as well as new innovative and improved designs. You will find JETporters are designed and manufactured with less than half the parts of competing aircraft tugs. Quality, reliability and trouble-free operation were the motivating factors for the design. The JP30 series handles aircraft up to 30,000 lbs and features a nosewheel lift cradle that eliminates the need for towbars. The JP30 series also features a two-speed transmission, an integral 12V-28V GPU for starting assist, dual braking system, rubberized coating on aluminum diamond plate, rear facing headlights and strobe light, on-board battery charger and diagnostic system as standard equipment.

The JP30L was created for aircraft that have deep-set nose wheels like the Falcon 20, 50, 900 and 2000. This model is three feet longer and has an additional set of batteries for greater endurance plus all the same advantages as the JP30.

JP30 and JP30L models now come with a 2-year limited warranty. Recent improvements include a powder coat finish for better protection against the elements and maintenance-free, longer life, easy ride solid rubber tires.

For more information on JETporter or any other Tronair product, please call **252-349-5847** or visit **www.carolinagse.com**

Best Regards,

Mike Blout
Carolina GSE

4901 Cypress Shores Drive
New Bern, NC 28562
U.S.A

e-mail: mblout@carolinagse.com
website: www.carolinagse.com

Phone: 252-637-5458
Cell: 252-349-5847
Fax: 252-637-7370

SPECIFICATIONS (JP30 and JP30L)

DIMENSIONS

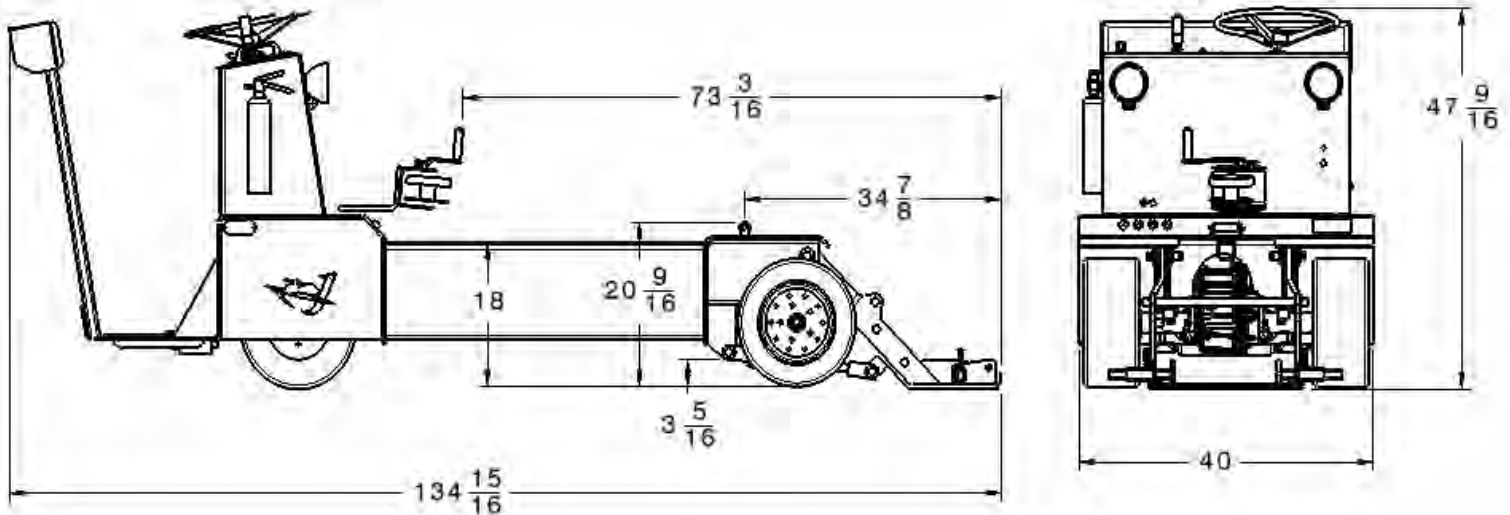
Weight	2,450 lbs (JP30) 3,000 lbs (JP30L)	Ground Clearance	3 5/16"
Length	135"(JP30), 171"(JP30L)	Deck Height	18"
Height	47"	Cradle Depth	16"
Width	40"	Cradle Width	19"
Steering Tires	(2) 4.00 x 8	Cradle Capacity	3,000 lbs
Drive Tires	(2) 16 x 7.5	Cradle Lift Height	6"
		Aircraft Clearance	20"

GROUND POWER UNIT

Battery Type	Eight – 6 Volt Deep Cycle (JP30) Sixteen – 6 Volt Deep Cycle (JP30L)
Charge Time Full Discharge	8 Hour Average
GPU Voltage	12-14/24-28/28-30 Volts
GPU Cable Length	14 ft, Adapters Included
Built-in Automatic Charger	120 Volt AC 20 Amp

CAPACITY

Empty Speed	10 mph	Full Load Speed	4 mph
Motor Horsepower	6 Hp	Maximum Aircraft Weight	30,000 lbs
Motor Duty Cycle	Continuous		



4901 Cypress Shores Drive
New Bern, NC 28562
U.S.A

e-mail: mblout@carolinagse.com
website: www.carolinagse.com

Phone: 252-637-5458
Cell: 252-349-5847
Fax: 252-637-7370

TECHNICAL DATA (JP30 and JP30L)

FRAME AND COMPONENTS

Heavy gauge steel formed and welded into a structural unit. All parts including bearings, gears and electrical components are heavy-duty industrial quality.

DRIVE MOTOR

A six horsepower, 48 volt, direct current continuous-duty cycle motor, designed specifically for JETporter, is coupled directly to the transmission.

MOTOR SPEED CONTROL

A digital logic controller, utilizing the latest MOSFET technology, controls the drive motor. Current limit, controlled acceleration and braking current are digitally programmed into each unit before shipment. An LED display on the console displays hours of use, battery condition as well as maintenance information.

POWER TRANSMISSION

Power transmission is by means of a two-speed transaxle with all gear drive components operating in an oil bath. There are no chains, couplings, belts or U-joints in the drive train. Operation is by means of control lever on the console.

MAINTENANCE

Maintenance of the drive motor, digital speed control and transmission are minor and routine. Most bearings operate in an oil bath or are sealed requiring minimal maintenance.

BATTERIES

Eight deep-cycle, six-volt batteries are connected in series providing 48 volts. (JP30)
Sixteen deep-cycle, six-volt batteries are connected in series providing 48 volts. (JP30L)

GROUND POWER UNIT

12/24/28-30 volts are provided to assist starting small aircraft engines. Two types and GPU plugs and 14 feet of cable are provided including Cessna/AN style and Piper style.

BATTERY CHARGER

A built-in, fully automatic, internal charger operates on 120 volts single phase AC from any outlet. Charging can be done anywhere, from any 120 volt 20 amp circuit, anytime the JETporter is not in use.

BRAKING

Dynamic braking is included in the solid-state control and is controlled by the operator reversing the directional control. Braking effort is operator adjustable and the operator can choose the amount of braking effort that is required.

PARKING BRAKE

An electrically released disk brake is mounted on the drive motor. Operation is automatic when the Safety Cut Off switch is depressed.

TECHNICAL DATA (JP30 and JP30L) continued

WINCH

A heavy-duty two-speed hand winch is standard. A nylon strut strap is included so that aircraft will not be damaged or scratched.

LIFT CRADLE

A direct current motor and hydraulic pump operate two lift cylinders that raise and lower the nose wheel lift cradle. Control is by "Raise" and "Lower" push buttons located on the control panel. The lift cradle is designed to accommodate both dual and single nose wheels. No attachments or adapters are required for nose wheels with fairings.

STEERING AXLE

Dual 4.00 x 8 industrial tires are used for steering. The steering axle assembly rides on tapered roller bearings, as do the wheels. The steering axle moves in a 120-degree arc to provide a very tight turning radius.

LIGHTING

Two rear facing headlights and a strobe light are included. Toggle switches control the front and rear headlights.

DRIVE TIRES

The drive tires are solid rubber 16 x 7.5 traction tires.

OPERATOR'S PLATFORM

The operator's platform is designed to accommodate the operator and a passenger. A Safety Cut Off switch is positioned on the left side of the operator's station. This switch must be depressed before the tug will operate. Releasing the switch stops the drive motor and applies the parking brake. The platform is free from pedals that encumber the operator. The operator's platform also has an emergency stop mushroom pushbutton to cut off power.

ACCESSORIES

- K-4101** On-Board Air Compressor
- K-4050** Slide In Pintle Hitch
- K-4051** JP30 & JP30L - Standard Tire Chains
- K-4096** JP30 & JP30L - Tire Siping
- K-4052** Westwind Adapter
- K-4054** JP30 ONLY - PC-12 Adapter
- K-4055** Falcon 50, 900, 2000 Adapter (required)
- K-4056** Lear 40, 45 Adapter (required)